

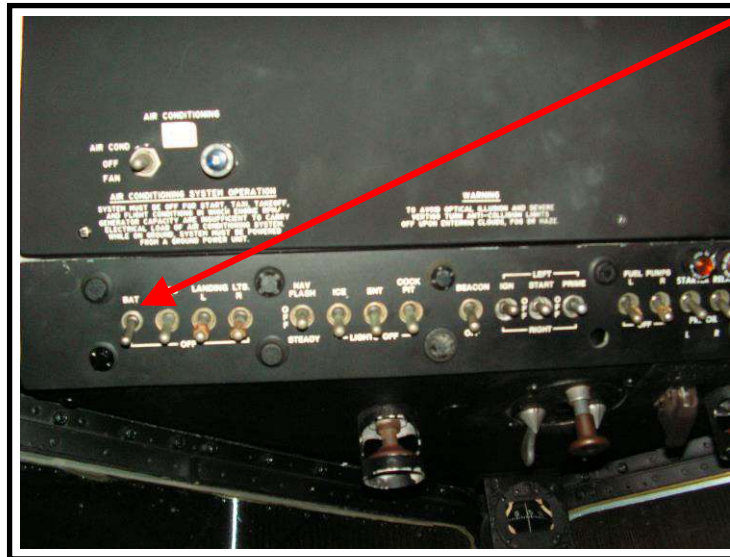
# Emergency Extraction Information for Aircraft N33VW



Aircraft Type: C-47 / DC-  
3 Registration: N33VW  
Pilot Name:  
Emergency Contact Name:  
Emergency Contact Number:  
Date:

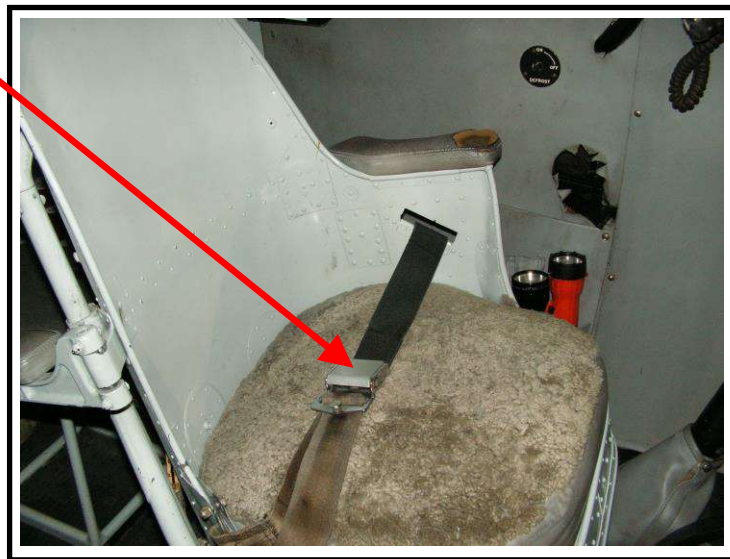
## Electrical/Ignition System N33VW

Overhead panel:  
Battery Master  
and all electrical  
switches; down  
is off.



## Harnesses Left Seat N33VW

Lift buckle to  
release belts.



Aircraft Type: C-47 / DC-3  
Registration: N33VW  
Pilot Name:  
Emergency Contact Name:  
Emergency Contact Number:  
Date:

## Harnesses Right Seat N33VW

Lift buckle to  
release belts.

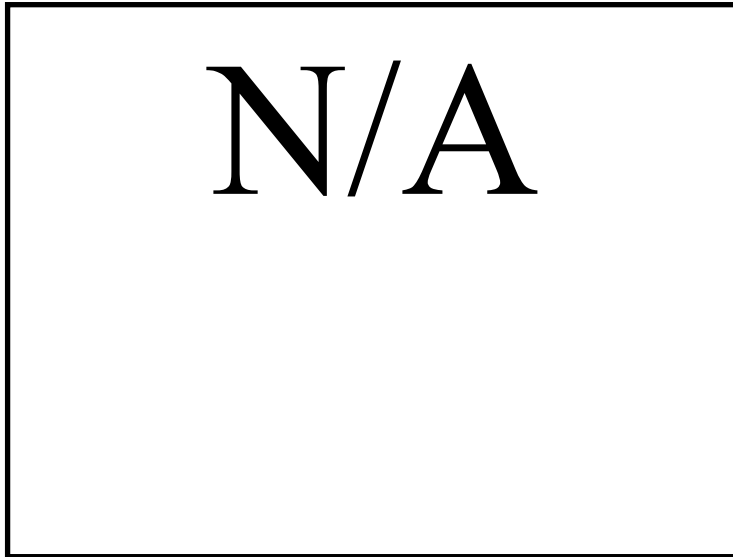


## Ejection System N33VW

N/A

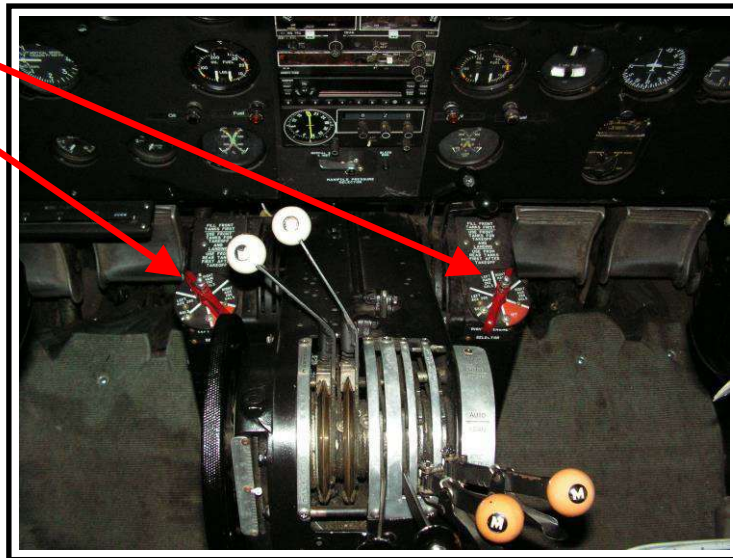
Aircraft Type: C-47 / DC-3  
Registration: N33VW  
Pilot Name:  
Emergency Contact Name:  
Emergency Contact Number:  
Date:

# Hazmat N33VW



Note: 2 (TWO) Fuel Selectors  
Rotate handle to  
5 o'clock position for "OFF".

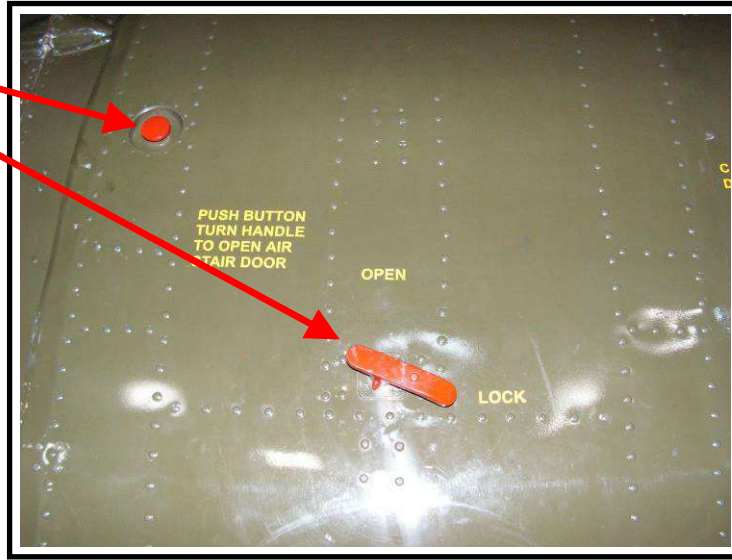
## Fuel System N33VW



Aircraft Type: C-47 / DC-3  
Registration: N33VW  
Pilot Name:  
Emergency Contact Name:  
Emergency Contact Number:  
Date:

## Air Stair Door on Left Side N33VW

Push button turn  
handle to "OPEN".



Rotate handle to  
"OPEN".

## Cockpit Door Left Side N33VW



Aircraft Type: C-47 / DC-3  
Registration: N33VW  
Pilot Name:  
Emergency Contact Name:  
Emergency Contact Number:  
Date: