

# Emergency Extraction Information for Aircraft

## Tora AI-313 “Kate” Torpedo Bomber N3242G

**Aircraft Type: AT-6/BT-13**

**(modified)**

**Registration: N3242G**

**Pilot Name: Craig Hutain**

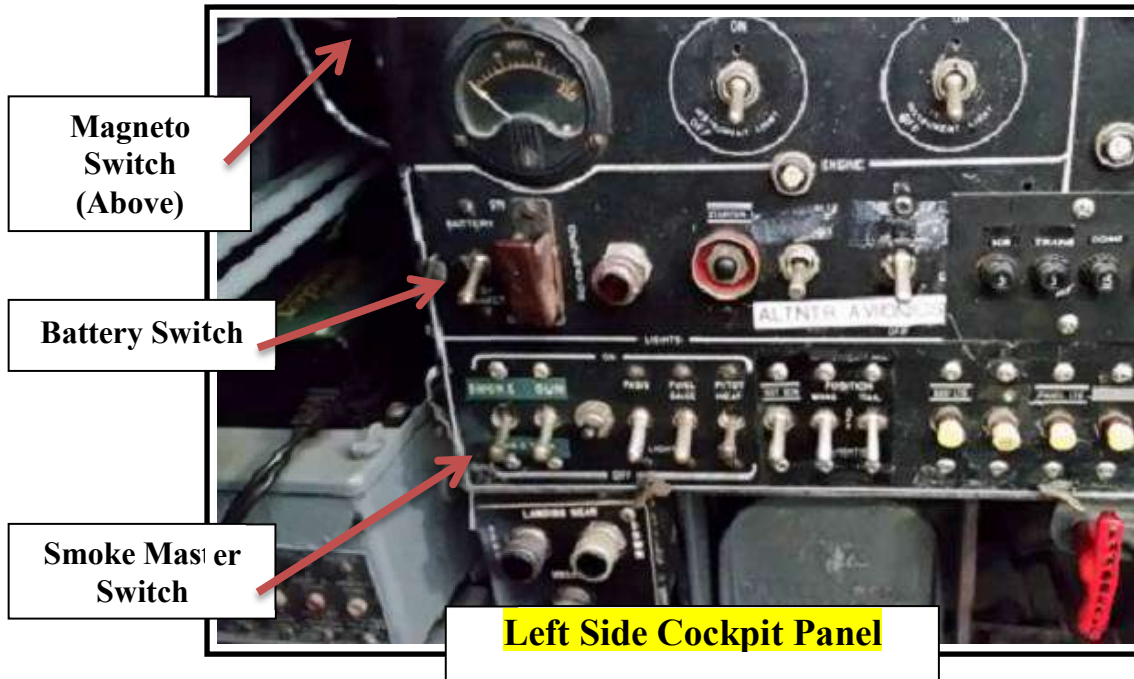
**Pilot Phone:**

**Emergency Contact Name:**

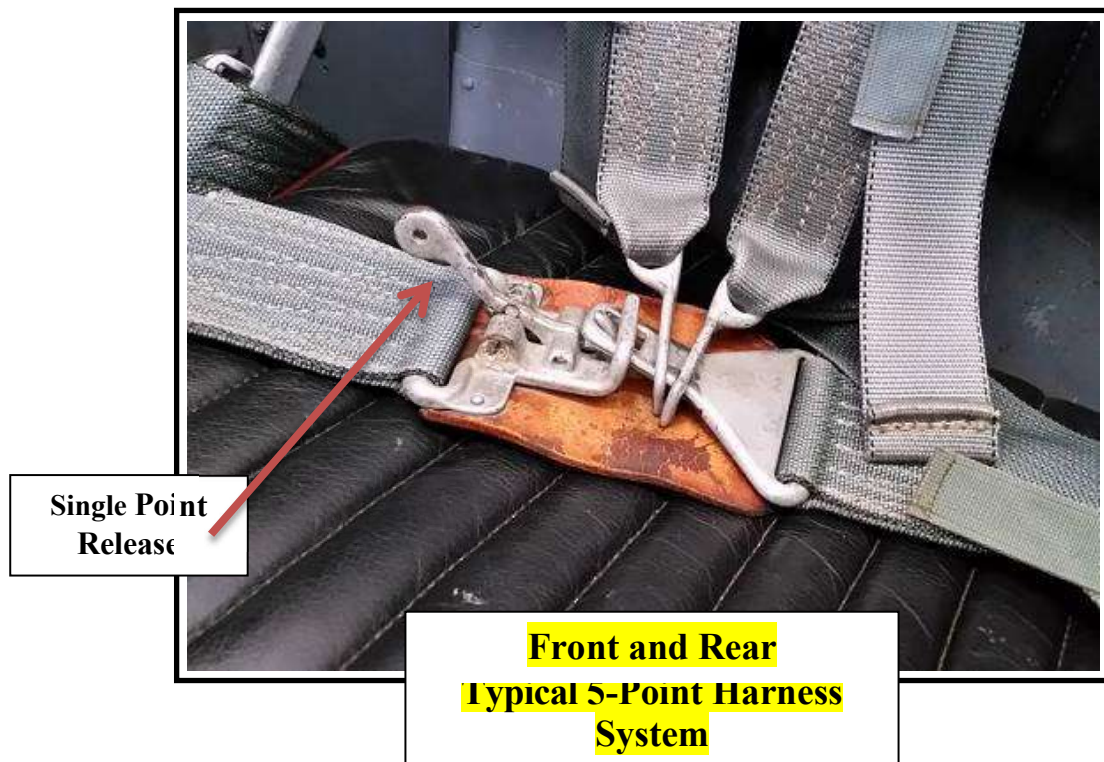
**Date: 4/2015**



## Electrical/Ignition System Tora Al-313 "Kate" Torpedo Bomber



## Harness System Tora Al-313 "Kate" Torpedo Bomber



# Ejection System

Tora Al-313 "Kate" Torpedo Bomber

**NONE**

# Hazmat

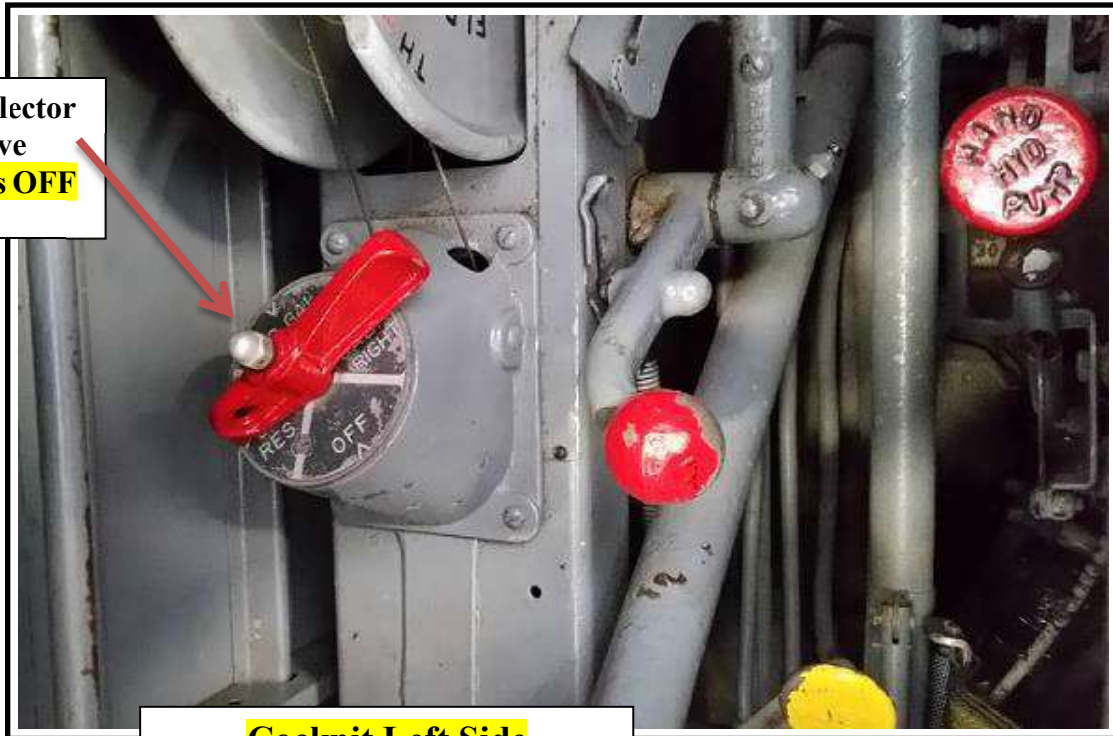
Tora Al-313 "Kate" Torpedo

110 Gallons of **Aviation Fuel 100LL** in the Wings and 5 Gallons of **Smoke Oil** underneath the Rear Seat

# Fuel System

Tora Al-313 "Kate" Torpedo Bomber

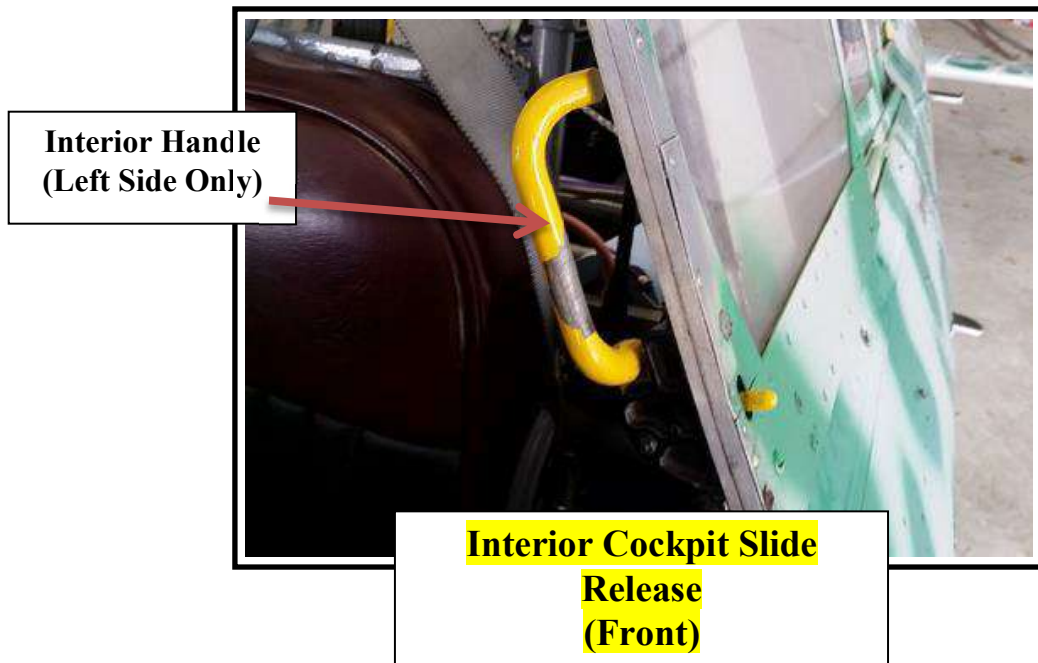
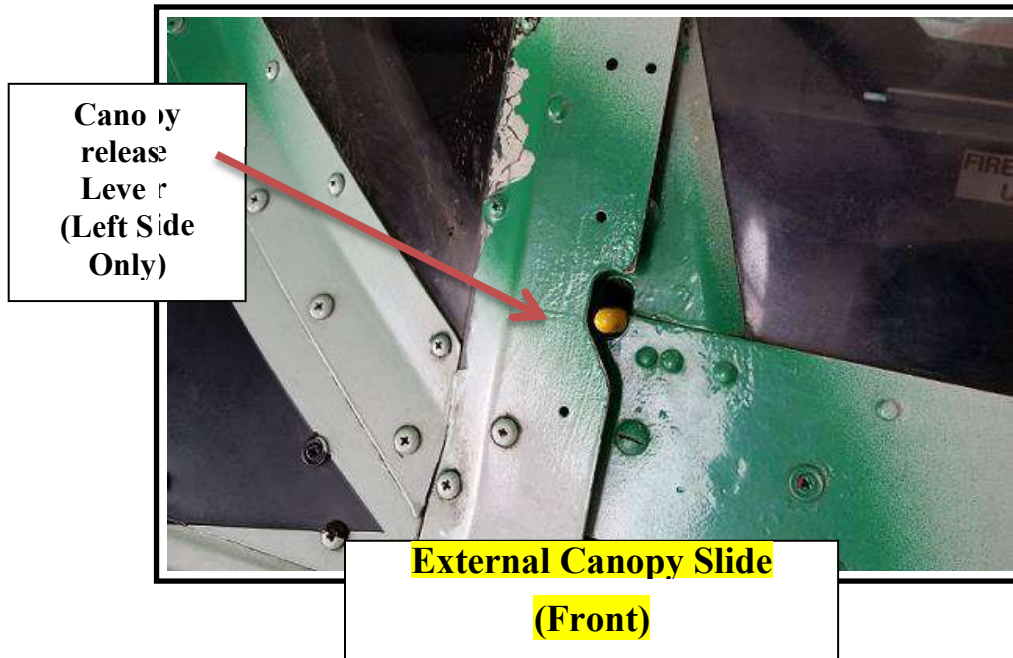
Fuel Selector Valve  
**Down is OFF**



**Cockpit Left Side**

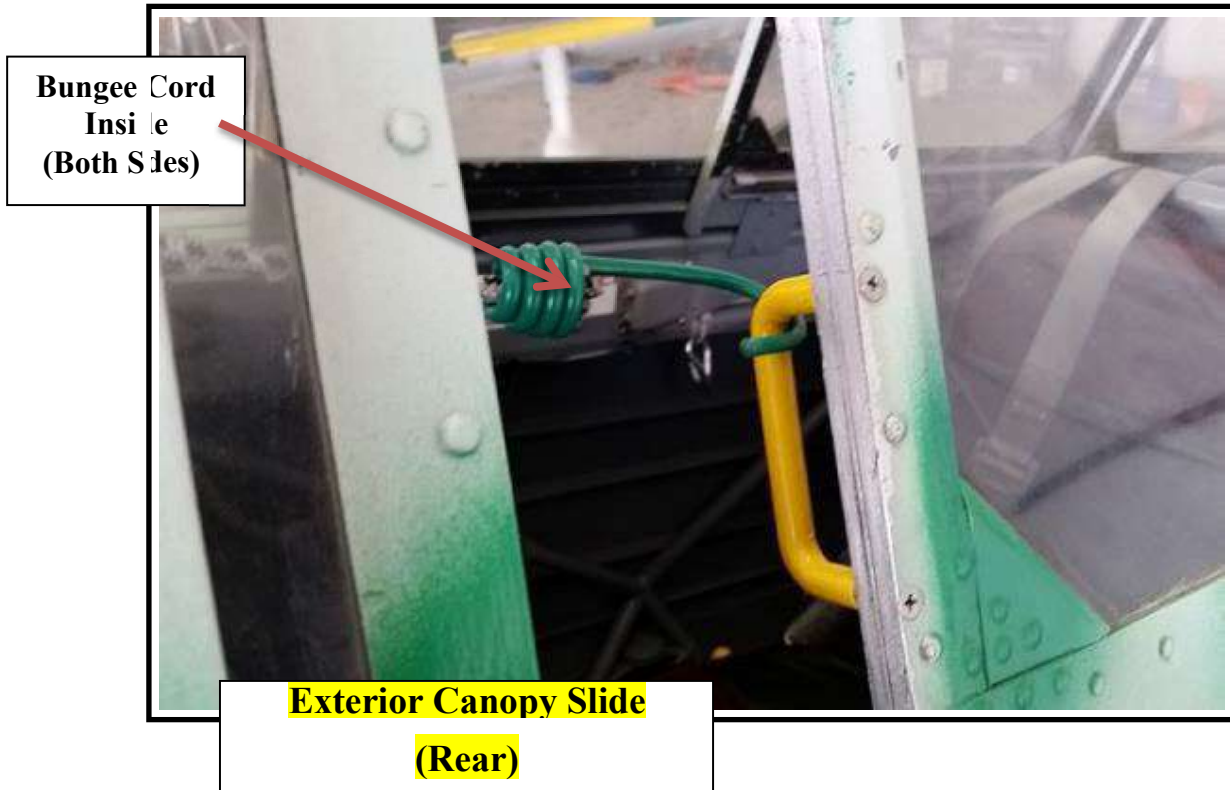
# Canopy System

## Tora AI-313 "Kate" Torpedo Bomber



# Canopy System (cont.)

## Tora AI-313 "Kate" Torpedo Bomber N3242G



**Aircraft Type: AT-6/BT-13  
(modified)**

**Registration: N3242G  
Pilot Name: Craig Hutain  
Pilot Phone:  
Date: 4/2015**